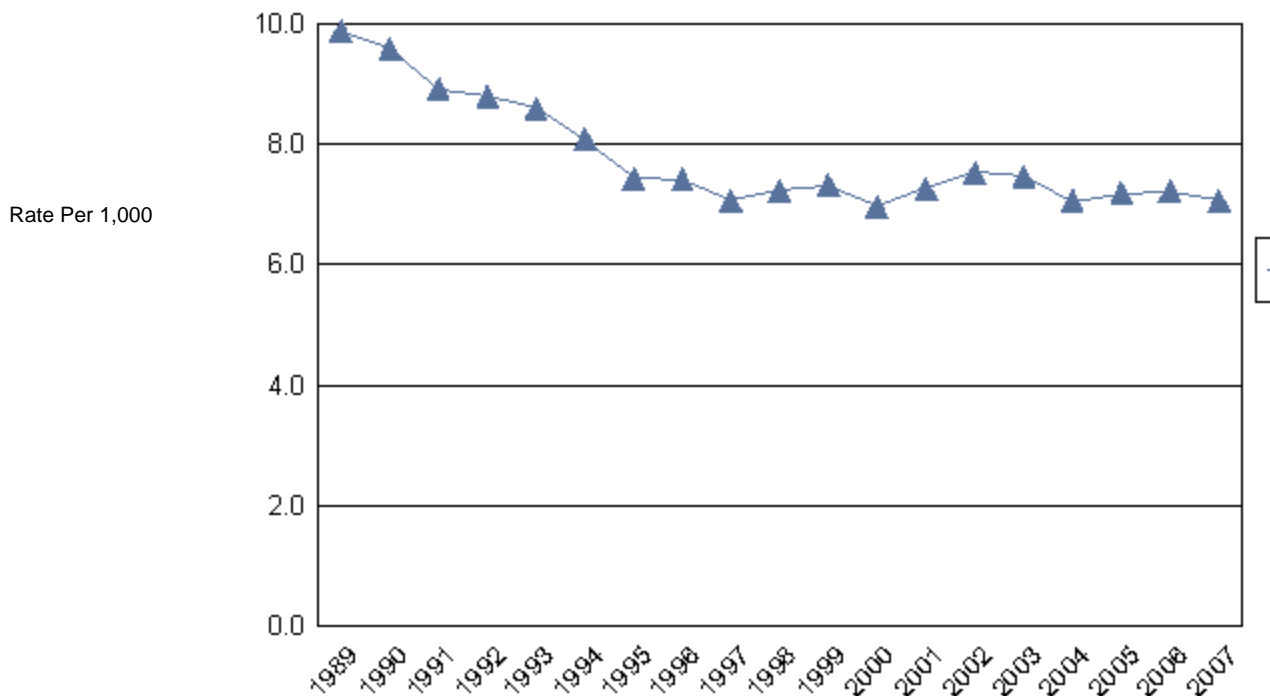


Total Infant Mortality
Single-Year Rate Per 1,000 Live Births



FloridaCHARTS.com is provided by the Florida Department of Health, Office of Planning, Evaluation and Data Analysis, (850) 245-4009

Data Source: Florida Department of Health, Bureau of Vital Statistics.

Data Note(s): Deaths occurring within 364 days of birth. Beginning in 2004, the state total for the denominator in this calculation may be greater than the sum of county totals due to an unknown county of residence on some records.

