



# PROVIDER EXCHANGE

## EVERY 6 DAYS A BLACK BABY DIES IN ORANGE COUNTY!

As one of eight counties selected to participate in the “Black Infant Health Practice Initiative”, the Healthy Start Coalition of Orange County received \$95,000 to delve into the issues surrounding the disparity between White and Black infant deaths. Black babies are more than twice as likely to die in their first year of life as White babies: in 2006 in Orange County, 14.6 Black infants died (per 1000 live births) compared to 6.7 White infants. The Healthy Start Coalition implemented the “Save Our Babies” project to raise awareness and provide education

throughout the African-American community at hair/nail salons, childcare centers, churches and small businesses about racial disparity in birth outcomes. With this additional funding for the Black Infant Health project, we will be able to conduct in-depth analysis of our data using the CDC’s Perinatal Periods of Risk approach and promote community involvement to develop and implement additional community-based interventions to address this disparity. We have assembled a wide array of agency partners and

individuals to spearhead this effort which includes conducting focus groups and developing marketing strategies. We are finding that consumers are unaware of the existence of this disparity, but are concerned and motivated to help find solutions. Through education, outreach and marketing, we hope to work with the community to begin closing the disparity gap. For more information on how you or your practice can get involved, call the Healthy Start Coalition of Orange County at: 407-741-5240.



### WHAT YOU CAN DO TO HELP...

- \* Attend the “Save Our Babies” Town Hall Meeting June 9, 2008 6:30pm at Jones High School
- \* Share information with your patients
- \* Schedule seminars and trainings

For more information contact Shena McFadden, Save Our Babies Program Coordinator at: 407-741-5243

## PERINATAL DEPRESSION – HEALTHY START CAN HELP

The leading cause of disease-related disability among women is depression. During the perinatal period the risk of depressive episodes among women is increased. It frequently goes unrecognized and exact prevalence and incidence rates are uncertain. However, published estimates of the rate of major and minor depression in the *postpartum* period range from 5% to more than 25% of new mothers; ACOG reports 10%. The

impact of perinatal depression on the cognitive and emotional development of the infant as well as the strain on the family can be devastating.\* Please remember to use your **Healthy Start Mental Health Resource Guide** to offer options for services to patients who may be experiencing mental health difficulties during or after pregnancy. In addition, Healthy Start can help through its Therapeutic Intervention

Program, or TIP. We provide free in-home counseling services for women. To be eligible for the Healthy Start TIP services, clients must:

- Be a Healthy Start client
- Reside in certain Orange County zip codes
- Agree to counseling services

Continue on page 3

## CONGRATULATIONS



Orange County Healthy Start would like to say "CONGRATULATIONS" to our Top 5 Screeners for the 1st Quarter: **Howard Blount, MD (90%), Andre C Jakubowski, MD (89%), South Orlando OB/GYN Group (89%), Louis Stern, MD (89%), Michael Stroup MD (87%)**. These percentages represent the ratio of ALL pregnant women or infants who consented to prenatal or infant risk screening offered by their private healthcare provider



from January 2008 through March 2008. These providers will receive gift boxes from *Edible Arrangements*. We would also like to congratulate our contracted providers **Apopka Family Health and Orange County Health Department Eastside, Hoffner, Lake Underhill, and Southside** offices for going over and beyond their contracted consent-to-screen rate of 95%. To become one of Healthy Start's Top Screeners for the 2nd Quarter, remember to make sure that EVERY pregnant women says "YES" to the Healthy Start screening and mail forms within 5-10 business days from date of completion.

### January-March 2008 Prenatal Screening Rates

OBSTETRICIAN/PRACTICE	OPR#	TOTAL FORMS PROCESSED	TOTAL CONSENTING TO SCREEN	YTD 2008 SCREENING RATE	2007 SCREENING RATE
Aloma Park OB/GYN	OPR023	28	21	75%	82%
Apopka Family Health	OPR111	96	95	99%	98%
Wilson, Jack MD	OPR112	19	12	63%	60%
Birthing Cottage	OPR113	16	11	69%	74%
OB/GYN Specialist-Winter Park	OPR114	60	38	63%	68%
Partner's in Women Health	OPR116	70	47	67%	75%
<b>Jakubowski, Andre C MD</b>	<b>OPR134</b>	<b>28</b>	<b>25</b>	<b>89%</b>	<b>88%</b>
Gibbs, Thomas C MD	OPR138	29	21	72%	62%
Winter Park OB/GYN	OPR140	28	16	57%	83%
OB/GYN Specialists of Central FL	OPR143	70	50	71%	86%
The Birth Place	OPR145	52	48	92%	89%
Loch Haven OB/GYN	OPR148	97	78	80%	75%
Serrao, John MD	OPR150	20	14	70%	83%
Crofoot, Kyle MD	OPR151	11	2	18%	69%
Family Health Center	OPR153	25	13	52%	79%
<b>Stroup, Michael MD</b>	<b>OPR156</b>	<b>15</b>	<b>13</b>	<b>87%</b>	<b>74%</b>
OCHD-LMC	OPR159	182	170	93%	92%
Chisholm, G. , MD	OPR163	0	0	0%	0%
Iurcovich, Roberto MD	OPR164	2	2	100%	56%
ORHS Medical Education/ Outpatient OB/GYN	OPR168	91	69	76%	83%
Perinatal Center OB/GYN	OPR169	0	0	0%	50%
Physician Associates-Waters Edge	OPR180	5	4	80%	80%
Scott, William T., MD	OPR183	0	0	0%	0%
Dr. Van Dyke & Bujnovski	OPR184	21	17	81%	100%
<b>South Orlando OB/GYN Group</b>	<b>OPR185</b>	<b>37</b>	<b>33</b>	<b>89%</b>	<b>91%</b>
Orlando Center for Women's Health	OPR189	57	41	72%	70%
OB/GYN of Central FL, P.A.	OPR191	71	54	76%	80%
<b>Howard Blount, MD</b>	<b>OPR193</b>	<b>10</b>	<b>9</b>	<b>90%</b>	<b>100%</b>
Pine Hills Family Health	OPR194	61	55	90%	97%
Lambert, Lori MD	OPR199	34	14	41%	66%
OB/GYN Specialist of Southwest	OPR300	77	64	83%	69%
Orlando OB/GYN Associate, P.A.	OPR301	0	0	0%	89%
Physician Associates-Sandlake	OPR303	76	51	67%	74%
Tororella, Michael MD	OPR304	26	18	69%	69%
Waite, Norma MD	OPR308	0	0	0%	88%
Dieguez & Olufa, OB/GYN	OPR310	40	29	73%	81%
Feld, Jeffery MD	OPR312	1	1	100%	83%
Physician Associates-Ocoee	OPR314	19	13	68%	74%

### January-March 2008 Prenatal Screening Rates

OBSTETRICIAN/PRACTICE	OPR#	TOTAL FORMS PROCESSED	TOTAL CONSENTING TO SCREEN	YTD 2008 SCREENING RATE	2007 SCREENING RATE
The Women's Center	OPR318	27	16	59%	72%
Stern, Louis MD	OPR320	19	17	89%	75%
White, Immogene MD	OPR321	15	9	60%	49%
Orange County Female Detention Ctr	OPR322	3	3	100%	92%
Physician Associates-Waterford Lakes	OPR323	26	13	50%	66%
OCHD-Eastside	OPR324	101	96	95%	94%
OCHD-Hoffner	OPR325	78	76	97%	93%
Winter Garden Family Health	OPR326	50	46	92%	95%
Women's Center for Total Health	OPR327	2	1	50%	84%
Premiere OB/GYN	OPR328	13	10	77%	63%
Women's Care Specialists	OPR400	17	14	82%	87%
Physician Associates-S Orlando	OPR401	22	19	86%	88%
OB/GYN Specialists of Central FL	OPR403	36	28	78%	91%
OCHD-Lake Underhill	OPR404	45	43	96%	93%
OCHD-Southside	OPR405	141	140	99%	99%
Total Woman Healthcare, P.A.	OPR410	1	1	100%	100%
Physician Associate-Baldwin Park	OPR415	0	0	0%	73%
OB/GYN Care Group	OPR420	0	0	0%	N/A
Physician Associate-Hunter's Creek	OPR425	0	0	0%	N/A

### January-December 2007 Postnatal Screening Rates

BIRTHING FACILITY	TOTAL # OF INFANTS	TOTAL SCREENED	YTD 2008 SCREENING RATES	2007 SCREENING RATE
Birthing Cottage	16	9	56.25%	60.42%
The Birth Place	21	18	85.71%	71.43%
Winnie Palmer Hospital	3597	2299	63.91%	57.70%
Florida Hospital/Orlando	629	407	64.71%	64.32%
Winter Park Memorial Hospital	560	355	63.39%	63.77%
Health Central	310	187	60.32%	62.76%

## PERINATAL DEPRESSION CONTINUED...

Some of the concerns we address are:

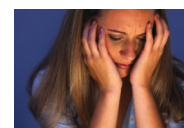
- Perinatal depression
- Grief and loss
- Anxiety
- Anger management

TIP is funded by the Healthy Start Coalition of Orange County through Lakeside Behavioral Healthcare (LBH). To initiate services, the LBH therapist receives a referral from the

Healthy Start program, contacts the client to schedule an in-home assessment and set treatment goals and then continues to meet the client at home on a regular basis to help them reach these goals.

For more information about this program, please contact the Healthy Start Program Office at 407-254-6822 and remember to screen every pregnant woman for

the Healthy Start program. Give



every baby the best start in life...A Healthy Start!!!

\*"Perinatal Depression – Prevalence, Screening Accuracy and Screening Outcomes Summary", Feb 2005, DHHS Agency for Healthcare Research and Quality; "The Role of State Public Health in Perinatal Depression", 2005, Assn. of State and Territorial Health Officials



ORANGE COUNTY  
**Healthy Start**  
COALITION INC.

600 Courtland St. , Suite 565  
Orlando, FL 32804  
Phone: 407-741-5246  
Fax: 407-741-5248

***Help give every baby the best  
start in life... A Healthy Start!!!***

**WE'RE ON THE WEB!**

**WWW.HEALTHYSTARTORANGE.ORG**

## **MYTHS ABOUT SUDDEN INFANT DEATH SYNDROME (SIDS)**

SIDS is the leading cause of death in children one month to one year of age, and in most cases the infant was believed to be healthy immediately before the death. The National Sleep Foundations has published "Myths about SIDS".

**Myth: SIDS is caused by Immunizations.**

There is no connection between immunizations and SIDS, according to a 2003 study by the Institute of Medicine's (IOM) Board on Health Promotion and Disease Prevention.

**Myth: Infants are at a greater risk for choking by sleeping**

**on their backs.**

Doctors have found no increase in choking or other problems in infants who sleep on their backs.

**Myth: Side sleeping is just as safe as back sleeping.**

Side sleeping is not as safe as back sleeping. Infants who sleep on their sides can roll onto their stomachs, increasing their risk of SIDS.

**Myth: It is never safe for an infant to be placed on his/her stomach.**

Infants can be placed on their stomachs when they are awake

and someone is watching the child. This "tummy time" is good for the baby because it can help develop neck and shoulder muscles.

**Myth: Sleeping on the back is unhealthy because it causes flattening of the back of the head.**

Flat spots on the back of the infant's head tend to go away within a few months after he or she learns to sit up. Placing baby on his or her stomach while awake and cuddling the baby in the upright position can also help reduce flat spots.

For more information on SIDS visit National Sleep Foundation at <http://www.sleepfoundation.org>